



Who's New on Campus
Westfield State College
Sponsored by: Class of 1994

WESTFIELD STATE COLLEGE



3 0386 0026 0132 3



WSC

You've Finally Made It

As you become a member of the Freshmen Class you are entering one of the most exciting and "scariest" times of your life.

- "I'm finally on my own."
- "I'm my own boss."
- "Nobody is going to tell me what to do."
- "Can I handle this new freedom?"
- "Will I get lost in the shuffle?"
- "Will I be around next year to call myself a sophomore?"

These and many more questions must be invading your thoughts as you make the big leap into college.

At this early point in your college life you are probably thinking that the exciting and good times apply to me and that the scary aspects only apply to "that kid that I saw during orientation that was alone and looking lost". Unfortunately, most freshmen experience some days that make them question the wisdom of their choice.

- "I could have stayed at home and gotten a job."
- "I surely miss my boyfriend/girlfriend."
- "These courses are a lot tougher than in high school."

You are fortunate to have chosen a school that can provide you with the excitement that you anticipate and the "friendly faces" to minimize the scary times.

Get started on the right foot and next year at this time you can be telling the bewildered-looking freshmen how you survived the first-year to now call yourself a sophomore.

Welcome to Westfield State College

WSC

Office of the President

TO: New Students
FROM: Dr. Ronald L. Applbaum, President
RE: "Who's New on Campus 1992"



I'm pleased to have the opportunity to welcome you to Westfield State College. The English poet, John Masefield once said that wherever a college stands, it stands and shines. As the nation's first public coeducational college, Westfield State College has been shining brightly for its students for over 154 years, casting light in all directions.

We are proud of our long and distinguished history. Throughout the years, we have served as an important state resource—providing opportunity through access, delivering quality academic programs and meeting many of the service needs of the region. WSC will offer you a firm foundation for productive careers and life-long learning, a sense of engagement with the intellectual currents of the times, an appreciation of the cultural diversity of our community and a commitment to social responsibility and service within society.

The time you spend as student at Westfield State College will be both personal and intense. You will be exposed to experiences that shape your view of life, provide a foundation for lifelong learning, furnish knowledge and provide skills for career opportunities upon graduation. I believe that you are quite fortunate to be attending Westfield State College; it has a community of faculty and staff who are dedicated to providing the best possible learning experiences for its students.

As you begin this year, you should know that the college environment is a reflection of its students, faculty, staff and administrators. As a member of the college community, you need to look carefully at the type of environment you want to create and foster. You need to work with other members of the campus to create a climate that is alive, vibrant, purposeful and responsive. I'm convinced that working together we can build a strong sense of community at WSC. Together, we can create at WSC a climate which is intellectually and socially vital.

It has been said that the way students relate to each other is the glue that holds together the entire college community. At WSC, we want students to be concerned about and sensitive to each other—to build a caring community. Students need to celebrate diversity, reject prejudice and provide for the needs of all members of our campus. We need to recognize the value of each student and the richness of the whole. We need to foster and promote recognition, understanding and tolerance of differences.

As the President, I want you to take advantage of the opportunities provided by Westfield State College. I want you to become an active participant in all aspects of the educational, social and cultural life of our campus community.

Ely Campus Center & Student Activities Programming

Since opening in 1971, the Ely Campus Center (then known as the "SU" or Student Union) has become a favorite meeting place on campus. Open seven days a week, the Campus Center provides the services, conveniences, and amenities the College Community need in their daily life. The Campus Center is most easily explained by looking at its People, Programs, and Places.

People

The Campus Center is not just a building. It is also an organization of people. Advisory boards and committees, in association with Staff and student employees, work together to make possible Campus Center facilities, services, and programs. "BOG" is the Campus Center Board of Governors. This appointed body advises the staff on matters pertaining to the operation of the Campus Center. "CAB" is the Campus Activities Board consisting of appointed and volunteer members of the College Community who produce campus activities. The administrative and clerical employees working with approximately one hundred fifty student employees make up the Staff who maintain eighteen different work stations. The focus of all Campus Center PEOPLE is to support the development of viable facilities, service and programs. Members of the College Community are encouraged to attend meetings or submit their ideas and suggestions to help insure that the Campus Center represents a well-considered plan for community life of this College.

Student Employment: Students interested in Campus Center employment requested to complete an Application for Student Employment in Ely-132.

Programs

Campus Center programs are primarily conceived and produced by the Campus Activities Board in cooperation with Campus Center staff. Many other campus groups also present programs with funding support from the Campus Center and the Student Senate. One programming objective of the Campus Center is to promote a broad-based and balanced schedule of educational, cultural, entertainment, recreation/leisure, and travel programs during the academic year.

Event publicity is contained in the WSC MONTHLY CALENDAR OF EVENTS produced September through May by the Campus Center Programming Office. Calendars are available at the Ely building, Dining Commons, and at each Residence Hall. Information also appears on electronic message boards in the Campus Center and in the Dining Commons. Any interested member of the College Community become a member of CAB. For information, call the Student Activities Coordinator at 413-568-3311, extension 449.

Place

Ely building facilities and services are open for business during the following hours of operations:

	CAMPUS CENTER	LIBRARY	SNACK SHOP	SWIMMING POOL	TELLER WINDOW
MON-THU	6AM-12MID	8AM-1AM	8AM-11P	11:30A,5P-11PM	10A-4PM
FRI	6AM-12AM	8AM-9PM	8AM-11P	11:30A-1P	10AM-4PM
SAT	12P-2AM	9AM-5PM	12P-11P	1PM-5PM	CLOSED
SUN	12P-12MID	12P-1AM	12P-11P	1PM-7PM	CLOSED

Be advised that service areas not listed above (including the Owl's Nest and faculty/staff offices) have unique schedules of operation. For further information contact each department or check schedules posted on facility or service area doors. For further information call the Campus Center Information Desk, Ext. 440.





Here's Something to Cheer About!

What is Available?

AMUSEMENT DEVICES
AUDIO/VISUAL EQUIPMENT
BILLIARDS
COMMUTER LOCKERS
FITNESS EQUIPMENT
INFORMATION DESK
LOCKER & SHOWER ROOMS
LOUNGES & MEETING ROOMS
MINIBUSES
OFFICES
OUTING EQUIPMENT
OWL'S NEST
PUBLIC TELEPHONES
PUBLICITY
RACQUETBALL COURT
SWIMMING POOL
THEATER
TELLER WINDOW
(Check cashing, box office, bus tickets & stamps)
VENDORS

Dean of Students Office

The Office Of Dean, Student Affairs and Judicial Affairs Coordinator are located in Ely Campus Center, Room 130. The staff is available for students throughout the day, with or without an appointment, to provide a wide range of services such as: Personal Guidance and Consultation

- Student I.D.'s/Personal Records
- Judicial/Disciplinary Complaints
- OWLS Leadership Program
- Transfer Student Orientation
- Freshmen Orientation
- Student Handbook
- Hazing Law Compliance
- Veterans Affairs
- General Student Services

The Student conduct regulations are published annually in the Student Handbook and are intended to enhance a safe and responsible academic and social environment. Anyone having complaints or feeling threatened in any way is encouraged to contact the office.

We maintain an open door policy and look forward to meeting with you. Best wishes for a very successful academic experience at Westfield State College!

- Tharon Williams, Office Secretary, Ext. 446
- Susan J. Basque, Judicial Affairs Coordinator, Ext. 403
- Peter D. Mazza, Dean, Student Affairs, Ext. 414

“Your Health Is Your Business”

Nobody can take care of your business but you. Listen to your body. Your lifestyle is the key to wellness.

If you're not feeling well, stop by Student Health Services located in the East Wing of Scanlon Hall, ext. 415. No appointment necessary.

A registered nurse is on duty 24 hours during the academic year. The college physician is on duty Monday-Friday, 10:30 am-1:00 pm days classes are in session. Pamphlets and other resource information are available.

All students who pay a health fee, commuters and residents, are eligible to utilize Student Health Services. There is no charge for the use of Student Health Services. Using this service can save you time and money.

OFFICE OF CAREER SERVICES

The Office of Career Services looks forward to working with new members of the Westfield State College community. Located in the Ely Campus Center, Room 146, The Career Office provides a wide range of programs, services, and resources to assist students and alumni with all facets of the career development process.

Preparing for a successful career requires careful planning, self-assessment, and the development of specific skills and abilities. This developmental process doesn't begin in the senior year with preparation of the resume and the first interview but requires hard work and thoughtful planning throughout your association with the College. The Office of Career Services is ready to assist you along the way.

PROGRAMS AND SERVICES

Career Counseling

Individual and group advising is available by appointment to assist students with self-assessment, and career exploration.

Computerized Job Matching and Credential File Service

Resources for seniors and alumni entering the world of work.

On-Campus Recruitment Program

A wide range of employers come to campus each year to interview candidates for professional positions.

Weekly Career Bulletin

A weekly newsletter highlighting career services, employment trends, current opportunities for full-time and summer work, internships and volunteer opportunities.

Career Forums and Seminars

Special seminars, scheduled throughout the academic year, are designed to introduce students to a wide range of career opportunities.

Workshops and Seminars

Workshops are scheduled on a regular basis to assist students in preparing a resume and developing interview and job search skills.

Career and Graduate School Resource Library

Graduate school catalogs and guides, applications for graduate school testing, and software to help prepare for the GRE and the GMAT, are available in the Career Resource Library.

Computerized Career Guidance System—SIGI PLUS

An interactive "user-friendly" software program that assists in identifying skills, interests, and abilities and exploring appropriate occupational options.

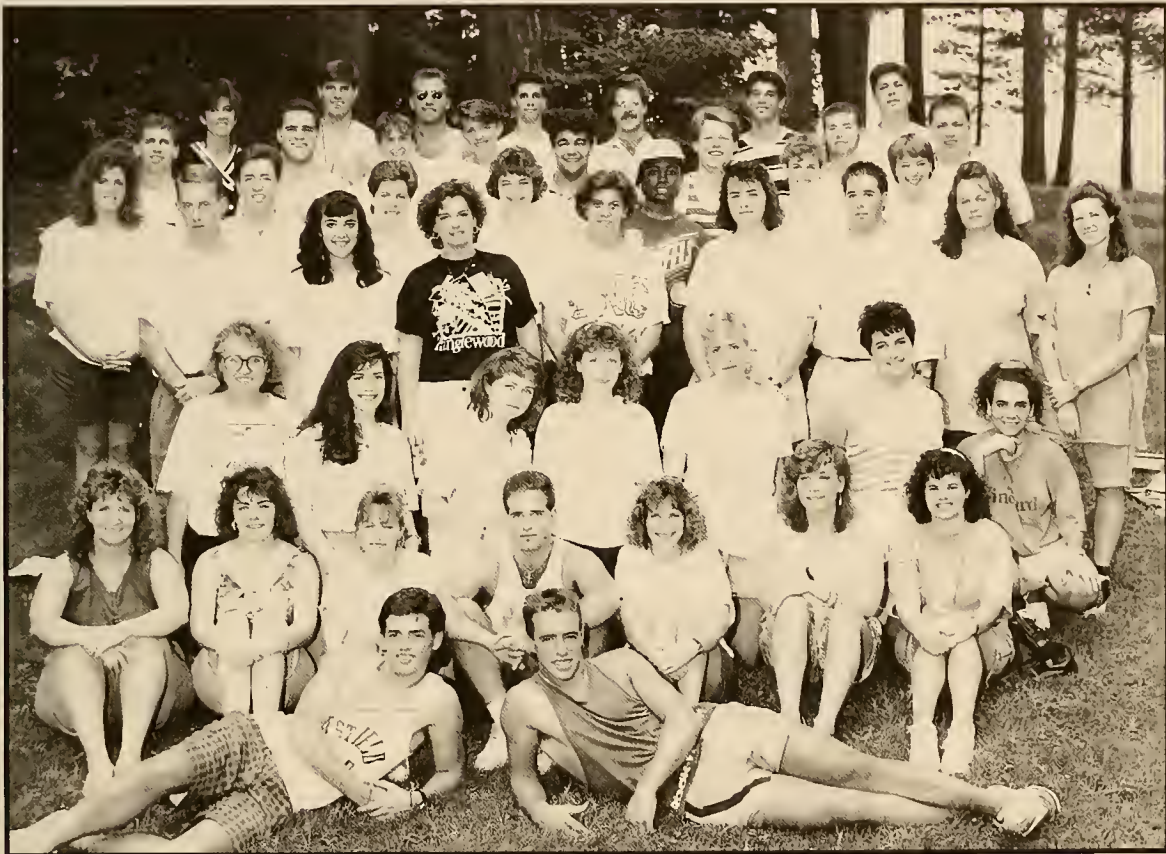
Alumni Resource Network

Career Fairs



Residential Life

1991 RA STAFF



Westfield State College has a long history of providing quality on-campus living for our students. Residential Life supports the educational mission of the college, promoting an atmosphere that fosters the ongoing development of our students. Resident students share a community with a variety of people, develop new and lasting friendships, and learn a variety of life skills.

Each residence hall community provides students the opportunity to get involved with the activities that take place in the hall. Each hall is self-governed with a hall council consisting of an executive board and section representatives. Students are encouraged to contribute and participate in activities and programs sponsored by the hall council. The quality and success of these programs is directly related to student involvement.

Each residence hall is also staffed with students called Resident Assistants. RA's are trained to assist residents in adjusting to the residential and academic community through programming, counseling, referral and being a resource person.

The RA position is challenging, demanding and rewarding. It offers students an opportunity to enhance leadership skills and develop an awareness of self and others.

WSC

Home Away From Home

Students living in residence halls have easy, quick access to all facilities on campus. The library, campus center, academic buildings, dining commons, athletic facilities, and the residence halls are within walking minutes away from one another. Our small community makes it easy for resident students to participate in a variety of programs the college offers. It is convenient to call a few classmates and within minutes set up a study group in one of the lounges, or walk down to the athletic field to support the Owls.

All resident students receive a copy of the "Guide to Residential Living" upon entering the hall. This book explains the policies and procedures set forth to ensure a safe, healthy learning environment for all students. Students are encouraged to read this information and adhere to the policies.

On-campus living is a unique opportunity to interact with a variety of people and learn more about one's self and about others. Residential Life strives to provide an optimum experience through programs, facilities and staff. We hope that you will enjoy being a member of our community and make the most of your experience at Westfield State College.





Department Of Public Safety

The Department of Public Safety is concerned with the safety of all who live, work, or visit the campus of Westfield State College. The Department is comprised of three different components. They are the College Police force, the College Security force and the Student Security force. In addition to the components, the Department is charged with the sale of Parking Decals and the enforcement of the Parking Policies. Like your hometown police department, we rely upon the cooperation and assistance of the community. We urge you to promptly report criminal activity, suspicious persons or vehicles and hazardous conditions that are observed on campus. The department's officers are law enforcement professionals and will investigate your observations and complaints.

Paul Ominsky
Director

LOCATION: The Department of Public Safety is located in Parenzo Hall. Telephone extensions: 262 or 263

What To Report

CRIMINAL ACTIVITY: IF YOU ARE THE VICTIM OF A CRIME, REPORT IT IMMEDIATELY, A delay in reporting will hinder any investigation. If you witness a crime or have information regarding a crime, report it immediately.

SUSPICIOUS PERSONS/VEHICLES/EVENTS: If you observe or hear something or someone suspicious, call the College Police. Give the best description possible of what you saw or heard. You may be responsible for preventing a crime.

ACCIDENTS/INJURIES/SUDDEN ILLNESSES: For emergency assistance contact the Department of Public Safety at ext. 262 or 263.

LOST AND FOUND: The department maintains a lost and found. If you lose some property, check with the department. If you find property, turn it in to Public Safety.

HAZARDOUS CONDITIONS: If you observe something you consider dangerous condition, report it promptly. You may be responsible for preventing an injury. Remember—we must all be concerned with safety.

Parking Decals

ALL regular users of the campus parking facilities must register their vehicle(s) with the Department of Public Safety, and must display a valid decal. Parking regulations will be strictly enforced. **VEHICLES IN VIOLATION OF THE PARKING REGULATIONS WILL BE TOWED AT THE EXPENSE OF THE OWNER.** For further information about parking regulations contact the department.

Athletics

The Westfield State College intercollegiate and intramural athletic programs excel in both quality and quantity. During each academic year, 13 varsity teams participate in intercollegiate competition, while more than 80 percent of the students at Westfield State participate in the intramurals program.

The varsity teams compete in Division III of the NCAA, which emphasizes the involvement and impact of the athletic programs upon the participants rather than on satisfying the entertainment needs of the public. Since the status of any athletic team is not dependent upon gate receipts or other revenue, no team is relegated to the category of a "minor sport." In addition, no financial aid packages based on a student's athletic abilities are awarded in the NCAA Division III.

Westfield State College is also a member of the Eastern College Athletic Conference (ECAC), New England College Athletic Conference (NECAC) and the eight-team Massachusetts State College Athletic Conference (MASCAC). Other MASCAC schools are Bridgewater State, Fitchburg State, Framingham State, North Adams State, Mass Maritime, Salem State and Worcester State.

Varsity Intercollegiate Teams

Fall	Women's Cross Country Field Hockey Football Soccer	Men's Cross Country Soccer
Winter	Basketball Indoor Track Swimming	Basketball Indoor Track
Spring	Softball Outdoor Track	Baseball Outdoor Track

Intramurals

Westfield State College has a broad spectrum intramural program designed to meet the needs of the diversified student enrollment. More than 20 programs are offered throughout the academic calendar year providing competitive and recreational activities to all students, faculty and staff. Each year the program also sponsors the Banacos Road Race, and the Jim Banacos Cup is awarded to the male and female teams which accumulate the most points during the school year.

Intramural Activities at Westfield State College

- Fall One Pitch Softball Tournament
- Sunday 5-on-5 Basketball League
- Volleyball League
- Banacos Road Race
- Basketball 4-on-4 League
- Water Polo League
- Basketball 1-on-1 Tournament
- Sports Trivia Tournament
- Football League
- Trimnastics
- Soccer Leagues
- Basketball Jamboree
- Candlepin Bowling
- Co-Rec Water Polo League
- Street Hockey League
- Softball League

Facilities

With the completion of the new baseball and softball fields, the Westfield State College outdoor facility ranks with the finest in the region. The fields are located next to the Astro-Turf Complex, the sight of many of the college's intercollegiate and intramural activities. The astro-turf field includes lights for night play. Tennis courts are also located at the complex. Stanley Park, located adjacent to the complex, is also used by students and faculty for recreational activities.

Indoor facilities on campus include a swimming pool in the Campus Center and a gymnasium in Parenzo Hall. An auxiliary gymnasium is located at the Juniper Park Elementary School next to the campus.

Athletic Eligibility

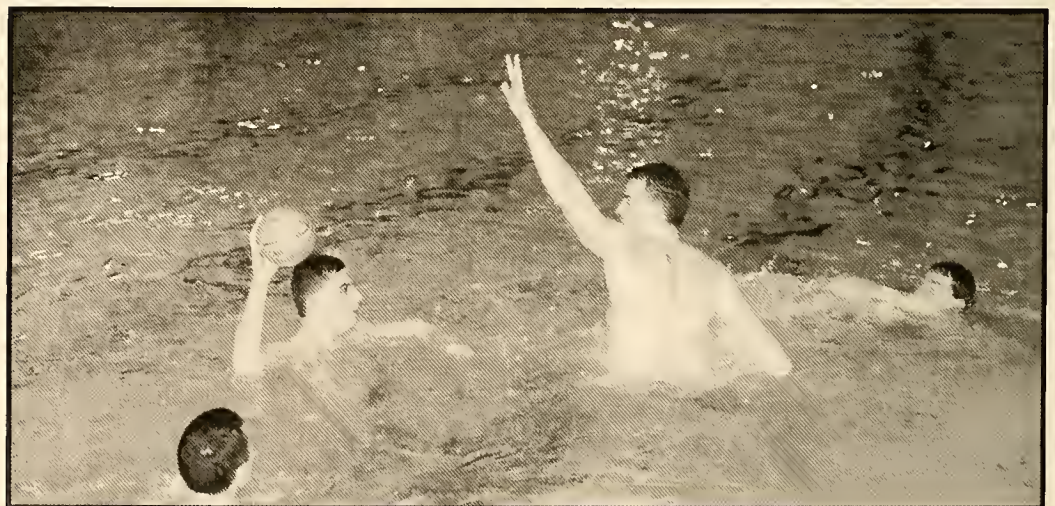
To be eligible to participate in varsity athletics at Westfield State College, students must carry a minimum of 12 credit hours per semester, must pass a minimum of 24 credit hours per year, and must be in good academic standing and making reasonable progress toward a degree. Students on academic probation are ineligible for intramural competition.

Questions?

The athletic and intramural offices are located on the second floor of Ely Hall, the Campus Center building. Contact:

- Paul Bogan, Athletic Director, Room 234, Extension 405.
- Ken Magarian, Intramurals Director, Room 230, extension 417.
- Mickey Curtis, Sports Information Director, Room 230, extension 433.





WSC



The Way To Go.

Pioneer Valley Transit Authority

110 WEST SPRINGFIELD/WESTFIELD STATE COLLEGE

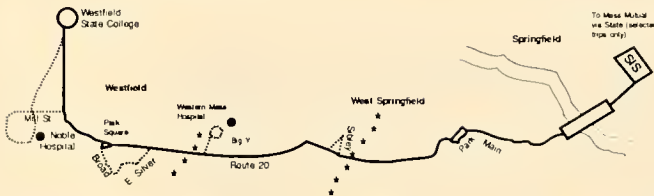
EFFECTIVE 9/3/91

For Transit Information, Call 781-PVTA or 596-5906.

110 WEST SPRINGFIELD/WESTFIELD STATE COLLEGE

Base fare: 65¢

*** -- ZONE BOUNDARY REQUIRES ADDITIONAL 15¢ FARE



110 WEST SPRINGFIELD/WESTFIELD STATE COLLEGE

Saturdays OUTBOUND INBOUND

LEAVE HARRISON AVENUE	BIG Y (RT 20) W SPFLD	PARK SQUARE	WESTFIELD STATE COLLEGE	PARK SQUARE	BIG Y (RT 20) W SPFLD	ARRIVE HARRISON AVENUE
6:30 am	6:55	7:05	7:15	7:30	7:40	8:00
7:15	7:40	7:50	8:00	8:10	8:20	8:45
8:00	8:25	8:35	8:45	8:55	9:05	9:30
8:45	9:10	9:20	9:30	9:40S	9:50	10:15
9:30	9:55	10:05	10:15	10:25	10:35	11:00
10:15	10:40	10:50	11:00	11:10	11:20	11:45
11:00	11:25	11:35	11:45	11:55	12:05	12:30
11:45	12:10	12:20	12:30	12:40	12:50	1:15
12:30 pm	12:55	1:05	1:15	1:25S	1:35	2:00
1:15S	1:40	1:50	2:00	2:10	2:20	2:45
2:00S	2:25	2:35	2:45	2:55S	3:05	3:30
2:45S	3:10	3:20	3:30	3:40S	3:50	4:15
3:30	3:55	4:05	4:15	4:25	4:35	5:00
4:15	4:40	4:50	5:00	5:10	5:20	5:45
5:00	5:25	5:35	5:45	5:55S	6:05	6:25
5:45	6:10	6:20	6:30	6:40	6:50	7:10
6:25S	6:50	7:00	---	7:00	7:10	7:40G
7:10	7:30	7:40	---	7:40S	7:50	8:10
8:10	8:30	8:40	---	8:40	8:50	9:15
9:15	9:35	9:45	9:55	10:05	10:15	10:35G

ROUTE INFORMATION

G -- Garage at 2840 Main Street
S -- To and from Western Mass. Hospital (Sanitorium)

110 WEST SPRINGFIELD/WESTFIELD STATE COLLEGE

Weekdays			OUTBOUND			INBOUND		
LEAVE HARRISON AVENUE	BIG Y (RT 20) W SPFLD	PARK SQUARE	WESTFIELD STATE COLLEGE	PARK SQUARE	BIG Y (RT 20) W SPFLD	ARRIVE HARRISON AVENUE		
5:00 am	5:20	5:30	---	5:30	5:40	6:10		
5:20	5:50	6:00	---	6:00	6:10	6:40		
5:50	6:10	6:20	---	6:20	6:30	7:10		
6:00	6:25	6:35	---	6:35WM	6:45WM	---		
---	---	---	---	---	*6:55WC	---		
6:10N	6:30	6:45	6:55	7:05S	7:20	7:40		
6:40	7:00	7:15	7:25	7:35	7:50	8:10		
7:10	7:30	7:45	7:55	8:05	8:20	8:40		
7:45	8:00	8:15	8:25	8:35S	8:50	9:10		
8:10S	8:30	8:45	8:55	9:05S	9:20	9:40		
8:40	9:00	9:15	9:25	9:35	9:50	10:10		
9:10	9:30	9:45-MP	9:55	10:05	10:20	10:40		
9:40	10:00	10:15	10:25	10:35	10:50	11:10		
10:10	10:30	10:45-MP	10:55	11:05	11:20	11:40		
10:40	11:00	11:15	11:25	11:35	11:50	12:10		
11:10	11:30	11:45	11:55-MP	12:05	12:20	12:40		
11:40	12:00	12:15	12:25	12:35	12:50	1:10		
12:10 pm	12:30	12:45	12:55	1:05	1:20	1:40		
12:40	1:00	1:15	1:25	1:35	1:50	2:10		
1:10	1:30	1:45-MP	1:55	2:05S	2:20	2:40		
1:40S	2:00	2:15	2:25	2:35N	2:50	3:10		
2:10	2:30	2:45-MP	2:55MP	3:05NS	3:20	3:40		
*2:20	2:45	2:55	---	2:55	3:03	3:30G		
2:40	3:00	3:15	3:25	3:35	3:50	4:10		
3:10	3:30	3:45	3:55-MP	4:05	4:20	4:40		
3:40	4:00	4:15	4:25	4:35	4:50	5:10		
4:10	4:30	4:45	4:55	5:05	5:20	5:40		
4:25MM	4:45	5:00	---	5:00	5:15	5:35G		
4:40	5:00	5:15	5:20	5:25	5:35	6:00		
5:10	5:30	5:45	5:55	6:05	6:20	6:40		
5:40	6:00	6:15	6:20	6:25	6:35	7:00G		
6:00S	6:25	6:35	---	6:35S	6:45	7:10		
6:40	7:00	7:10	7:20	7:30	7:50	8:10		
7:10	7:30	7:40	7:50	8:00S	8:10	8:30G		
8:10	8:30	8:40	---	8:40	8:50	9:15		
9:15	9:35	9:45	9:55	10:05	10:15	10:35G		

ROUTE INFORMATION

G -- Garage at 2840 Main Street
WC -- Leave Westfield Shops for Cathedral High School
S -- To and from Western Mass Hospital (Sanitorium)
N -- Serves Noble, Silver & Broad sts
WM -- Westfield to Mass Mutual
MM -- Leaves Mass Mutual at 4:10 pm for Westfield
* -- Does not operate when school is not in session
MP -- Serves Mill Pond via Mill Street (Wstfld.)
-- Trips service Mill Street via South Maple & West Silver streets

WAYS TO GO

PVTA provides three convenient ways to go. Exact change, Tokens, or PVTA Monthly Bus Passes. PVTA offers four types of passes. The cost of the trip is paid by flashing either the E & H (1/2 Fare) pass (for qualified riders only), the One-zone, Two-zone, or Three-zone pass

PVTA TRANSFERS

All transfers from one PVTA bus to another are free

FOR TRANSIT INFORMATION, PLEASE CALL 781-PVTA.

Westfield State College pass for routes 110 & 208 only; available in Scanlon Hall, W.S.C.

The Pioneer Valley Transit Authority is free to all Westfield State College students with a college-id. You could travel to the Westfield Shops, Springfield, or just go into the center of town. However, if you go beyond Springfield, be prepared to pay the fare. Take advantage now, it might be the only free ride you get.

Important Numbers

On-campus

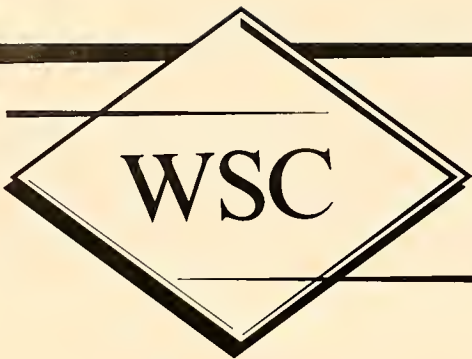
- Public Safety Ext. 262
- Library Ext. 234
- Business Office Ext. 256
- Campus Center Ext. 440
- Infirmery Ext. 415
- Snack Shop Ext. 441
- Financial Aid Ext. 407
- Registrar's Ext. 240
- Intramurals Ext. 424
- WSKB Radio Ext. 427
- Dial-A-Menu Ext. 422

Off-campus

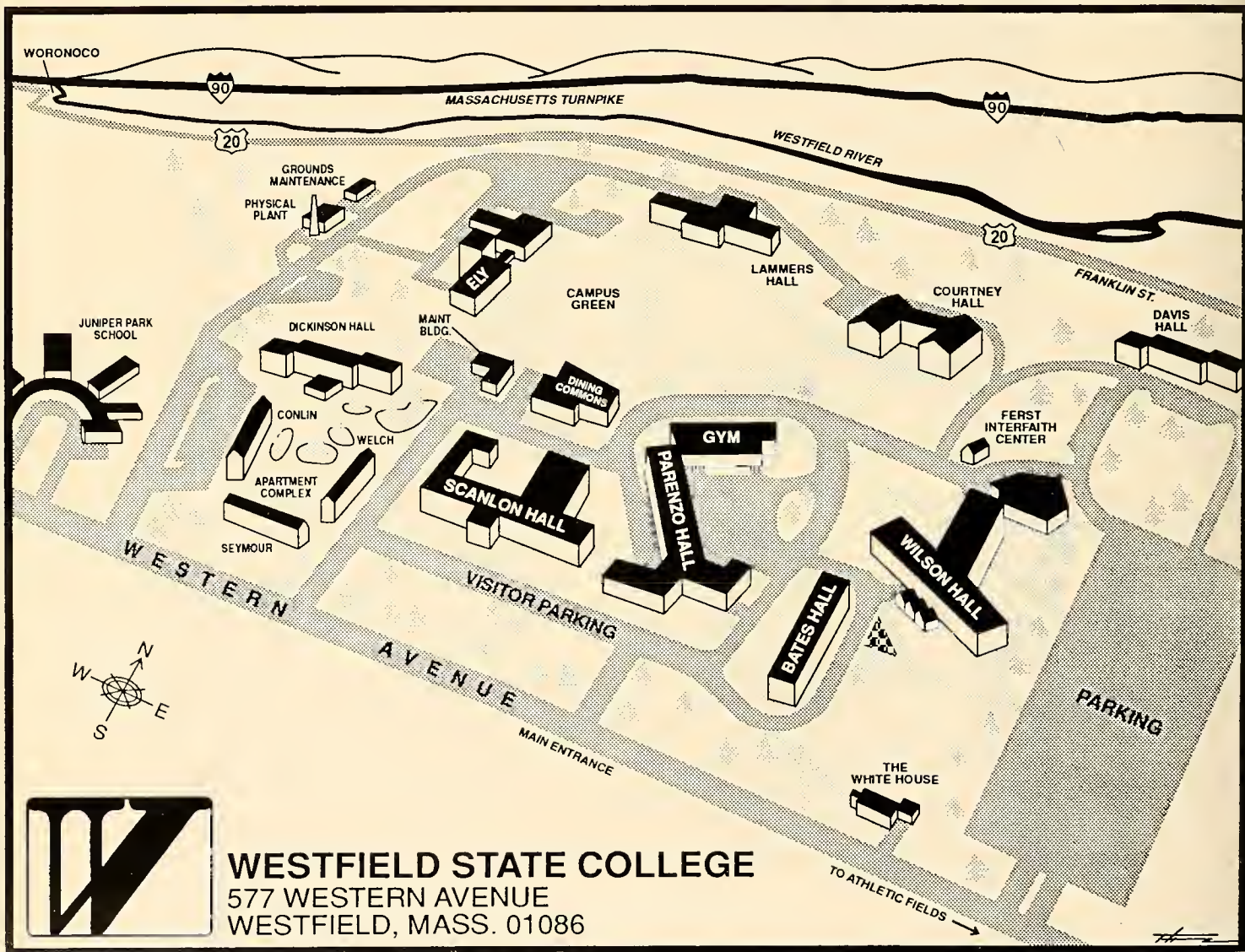
- Burger King 562-0380
- Papa Gino's 562-5139
- Domino's 568-6333
- Subway 534-3103
- Showcase Cinemas 733-5131
- Noble Hospital 568-2811
- Blockbusters 562-8422

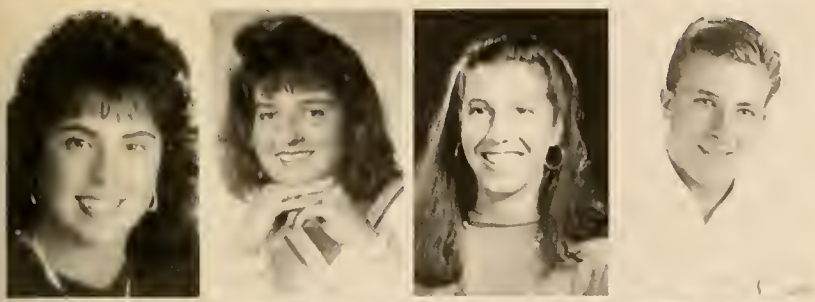
WSC





Campus Map





MARYBETH ADAMS

Braintree, MA
People, Publications

Braintree H.S.
Psychology

CHRISTINE ALLEN

Newbury, MA
People, Skiing

Triton Regional H.S.
Business

ELLEN AQUINO

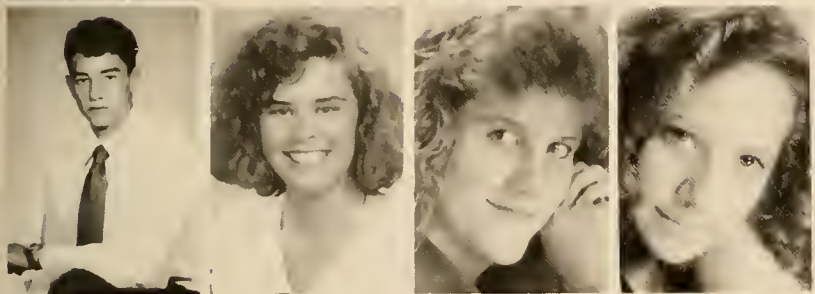
Needham, MA
Chess, Choir

Needham H.S.
Criminal Justice

JOHN ARCOUETTE

Enfield, CT
Music, Swimming

Enrico Fermi H.S.
Criminal Justice



CHRISTOPHER AUBUT

Westport, MA
Skiing, Surfing

Land Mark School
Sports Medicine

KATHLEEN AUCOIN

Waltham, MA
Gymnastics, Soccer

Arlington Catholic H.S.
Criminal Justice

JANELLE BADI

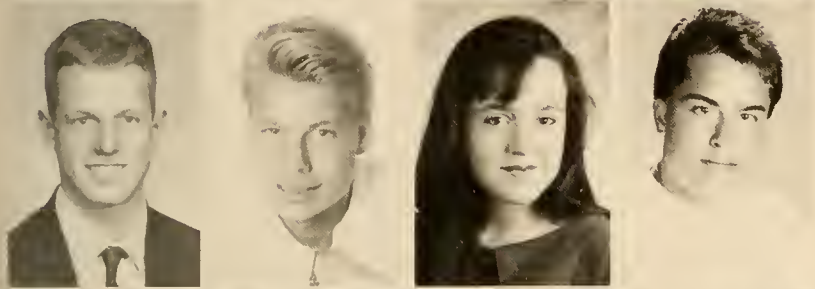
Southwick, MA
Travel, Yearbook

Southwick Tolland Reg. H.S.
Psychology

RENEE BARSALOU

Westfield, MA
People, Running

Westfield High
Communications



CHRISTOPHER BEASLEY

Southboro, MA
Baseball, Camping

Algonquin Regional High
Criminal Justice

GARRETT BELL

Sandwich, MA
Music, Weightlifting

Sandwich H.S.
Liberal Arts

SARA BENDER

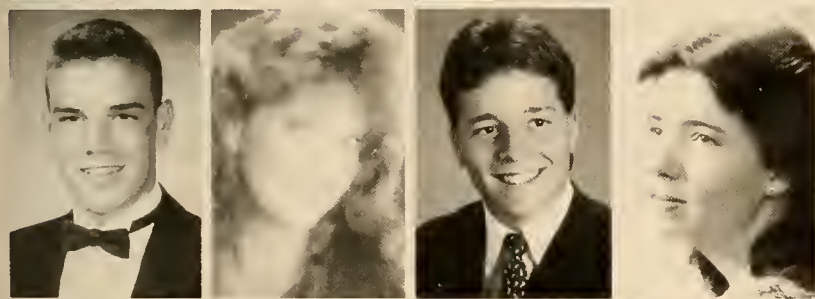
Holyoke, MA
Cheerleading, Gymnastics

Holyoke H.S.
Education

GREGORY BENOIT

Agawam, MA
Baseball, Tennis

Agawam H.S.
Movement Science



MATTHEW BERGMANN

Averill Park, NY
Art, Soccer

Averill Park H.S.
Fine Arts

LISA BIKOWSKI

Suffield, CT
Dancing, Soccer

Suffield H.S.
Business

GREG BIRD

Lynnfield, MA
Art, Baseball

Lynnfield H.S.
Business

JOANNA BOGDAN

North Adams, MA
Poetry, Swimming

Drury
Psychology



JOANNA BOISVERT

Tyngsboro, MA
Choir, Yearbook

Tyngsboro High
Biology

KRIS ANN BOTKA

Hopkinton, MA
Cheerleading, Tennis

Marian H.S.
Pre-Med

LAURA BOWKER

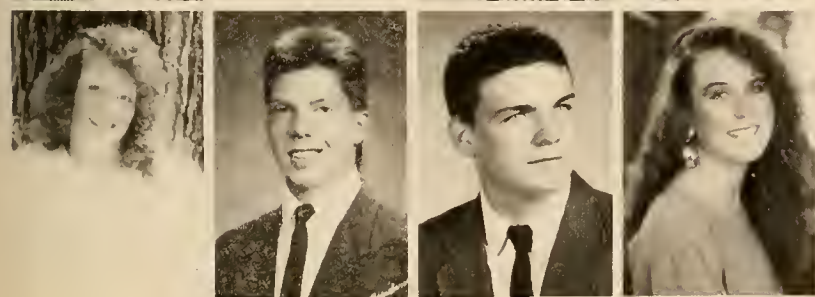
Holden, MA
Music, Swimming

Wachusett Regional H.S.
Humanities

STACY BROWN

Jewett City, CT
Aerobics, Dancing

St. Bernard
Psychology



JENNIFER BURTON

Plymouth, MA
Basketball, Softball

Plymouth North H.S.
Criminal Justice

MICHAEL CALABRO

Beverly, MA
Basketball, Tennis

Beverly H.S.
Journalism

JAY CALLAHAN

Somerville, MA
Basketball, Football

Austin Prep. School
Mass Communications

SVEA CARLSON

Westport, MA
Student Gov't, Cheerleading

Westport
Criminal Justice

RICH CARRA

Agawam, MA
Camping, Fishing

STEPHANIE CASTRONOVA

Lee, MA
Soccer, Softball

CYNTHIA CIOTTI

Suffield, CT
Cheerleading, Dancing

ANDREW CLARK

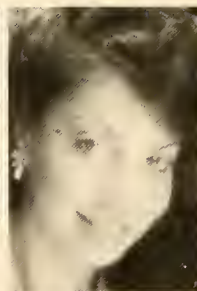
Springfield, MA
People, Skiing

Agawam H.S.
Computer Science

Lee H.S.
Psychology

Suffield H.S.
Psychology

Central
Undecided



LORI COGGESHALL

Duxbury, MA
Gymnastics, Volleyball

CALLA COLE

Randolph, MA
Drama, Golf

REBECCA COONERLUDT

Dudley, MA
Raquetball, Playing Pool

THOMAS COONEY

Leicester, MA
Fishing, Football

Duxbury H.S.
Mathematics

Fontbonne Academy
English

Shepherd Hill H.S.
Criminal Justice

Leicester H.S.
Biology



DARYLE CORRIVEAU

Auburn, MA
Baseball, Billiards

MICHAEL CORTIS

Russell, MA
Politics, Student Gov't.

AMY COSENTINO

South Dartmouth, MA
People, Swimming

MATTHEW CRAIG

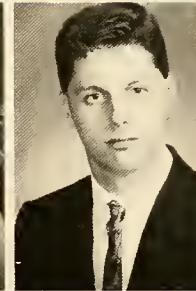
Attleboro Falls, MA
Football, Track

Wachusett Regional H.S.
Criminal Justice

Gateway Regional
History

Dartmouth H.S.
Psychology

North Attleboro H.S.
Mass Communications



KERRI CROSBY

Groton, MA
Running, Soccer

STEVEN CURTIS

Lexington, MA
Film, Music

DAVID DAHILL

East Bridgewater, MA
Hockey, Weightlifting

MARGUERITE DALICANDRO

Medway, MA
People, Volleyball

Groton-Dunstable Regional
Education

Lexington H.S.
Mass Communications

East Bridgewater H.S.
Criminal Justice

Medway H.S.
Sports Medicine



ERIC D'ANTONIO

Wilmington, MA
Golf, Basketball

BRIAN DAVIS

East Longmeadow, MA
Soccer, Tennis

MARION DAVIS

Franklin, MA
Skiing, Soccer

CHRISTINA DECOULOS

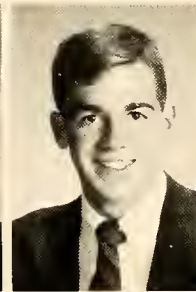
Boxford, MA
Music, Piano

Austin Prep. School
Business

East Longmeadow H.S.
Business

Franklin H.S.
Business

Masconomet Regional
Education



JOHN DEFINA

Waltham, MA
Basketball, Cars

JESSICA DE LORENZO

Cohasset, MA
Skiing, Soccer

DAVID DE PAOLO

Milford, MA
Bicycling, Music

DEBBY DESJARDINS

Springfield, MA
Music, Creative Writing

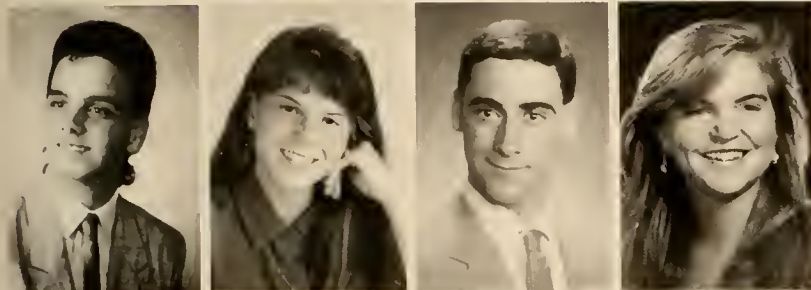
Waltham H.S.
Criminal Justice

Cohasset H.S.
Education

Milford H.S.
Psychology

Central High
Psychology



**KEVIN DEVINE**Norwell, MA
Baseball, FootballNorwell H.S.
Communications**ERIN DOHERTY**Saugus, MA
Dancing, TennisSaugus High
Criminal Justice**TIMOTHY DOIRE**Wrentham, MA
Art, ReadingKing Philip Regional H.S.
Science**LISA DOUAIRE**Grafton, MA
Softball, Field HockeyGrafton H.S.
Pre-Law**GREGORY DOUCETTE**Reading, MA
Basketball, ComputersReading High
Business**JESSICA DRANKA**Holyoke, MA
Aerobics, HockeyHolyoke H.S.
Education**KEVIN DRINAN**Belmont, MA
Football, BaseballBelmont High
Undecided**TASHA DUDMAN**Sherborn, MA
Drama, YearbookDover-Sherborn
Pre-Law**ROBERT DUGRE**Chicopee, MA
Fishing, HikingChicopee Comprehensive H.S.
Computer Science**TARA DULONG**Stoneham, MA
Math, ReadingStoneham H.S.
Business**NICOLE DURAND**Gilbertville, MA
Aerobics, DancingQuabbin Regional
Undecided**BRUCE EDDY**Pittsfield, MA
Bowling, MusicPittsfield High
Computer Science**JASON ELLIS**Lynn, MA
Baseball, SkiingBishop Fenwick H.S.
Regional Planning**KARLA ENGMAN**Westminster, MA
Softball, YearbookOakmont Regional
Undecided**HEATH ESTRELLA**Oak Bluffs, MA
Basketball, VolleyballMartha's Vineyard Reg. H.S.
Business**BRYANT FALZONE**Wilmington, MA
Football, WeightliftingWilmington High
Liberal Arts**CORINNE FARRELL**Dorchester, MA
Soccer, SoftballFontbonne Academy
Liberal Arts**CHRISTINE FENNER**Lee, MA
Camping, PoetryLee H.S.
Education**APRIL FERREIRA**Chicopee, MA
Aerobics, DancingChicopee Comprehensive H.S.
Education**MATTHEW FINN**Peabody, MA
Basketball, MusicPeabody Veterans Memorial
Liberal Arts**KELLY FLAHERTY**Woburn, MA
Art, CheerleadingArlington Catholic
Fine Arts**MARK FLAHERTY**Norwood, MA
Music, TrackNorwood H.S.
Graphic Design**WENDY FLEBOTTE**Agawam, MA
Drama, TennisAgawam H.S.
Liberal Arts**KIMBERLY FLEMING**North Andover, MA
Soccer, Student Gov't.North Andover H.S.
Criminal Justice

LORI FREDERICK

Cheshire, MA
Music, People

Hoosac Valley
Business

JULIE GABRIEL

Hopkinton, MA
Soccer, Aerobics

Hopkinton H.S.
Sociology

ROBERT GAGNON

Chelmsford, MA
Golf, Hockey

Chelmsford High
Marketing

BRYAN GALIPEAU

Acushnet, MA
Weightlifting, Bodybuilding

Old Colony Regional Vo-Tech.
Chiropractic Biology



ANDREA GARCIA

Carlisle, MA
Soccer, Volleyball

Concord-Carlisle H.S.
Education

RACHEL GENTILE

Framingham, MA
Guitar, Music

Framingham North
Music Education

MARY GIBNEY

Sterling, MA
Basketball, Soccer

Wachusett Regional H.S.
Criminal Justice

KRISTEN GLYNN

Norwell, MA
Volleyball, Field Hockey

Norwell High
Education



SHERI GOULET

Easthampton, MA
Animals, Soccer

Easthampton High
Criminal Justice

SHANNON GRAHN

Middleboro, MA
Swimming, Tennis

Middleboro High
Liberal Arts

LEAH GREENBERG

Brockton, MA
People, Reading

Brockton H.S.
Business

TAYLOR GREGG

Duxbury, MA
Weightlifting, Wrestling

Duxbury H.S.
Political Science



MELISSA HAGENAARS

Waltham, MA
Aerobics, People

Waltham Sr. High
Criminal Justice

EMILY HARNISH

Shillington, PA
Softball, Volleyball

Governor Mifflin
Music

JENNIFER HARRINGTON

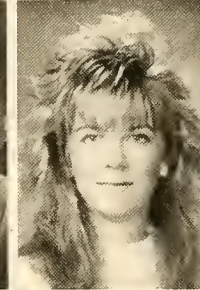
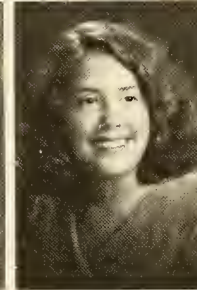
Westwood, MA
Basketball, Volleyball

Westwood High
Liberal Arts

SHAUN HARRINGTON

Holyoke, MA
Skiing, Soccer

The Forman School
Sports Medicine



PATRICK HARTMANN

Yarmouth Port, MA
Baseball, Weightlifting

Dennis-Yarmouth H.S.
Criminal Justice

TRACY HARTY

Milford, MA
Poetry

Milford H.S.
Psychology

JENNIFER HINES

Lowell, MA
Animals, Soccer

Lowell H.S.
Humanities

KEITH HOPKINSON

Ludlow, MA
Guitar, Hockey

Ludlow H.S.
Business



TIMOTHY HUBACZ

North Brookfield, MA
Golf, Volleyball

North Brookfield H.S.
Pre-Law

CYNTHIA JABRY

Feeding Hills, MA
Drama, Volleyball

Agawam H.S.
Business

DANIEL JAMMAL

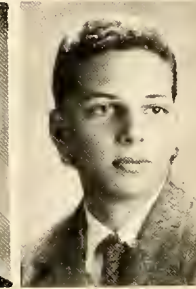
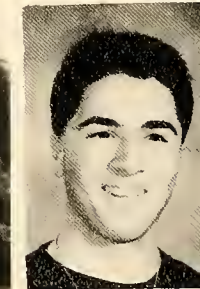
Arlington, MA
Football, Soccer

Arlington High
Business

KEVIN JOHNSON

Southwick, MA
Bowling, Tennis

Southwick H.S.
Business





TIMOTHY JOSTI

Spencer, MA
Drama, Music

David Prouty Regional H.S.
Education

TARA KATZ

Framingham, MA
Skiing, Softball

Framingham High
Education

JENNIFER KEATING

Sharon, MA
Art, Softball

Bishop Feehan
Education

DAVE KELLEY

North Reading, MA
Soccer, Tennis

North Reading High
Criminal Justice



NICOLE KENNEY

Waltham, MA
Aerobics, Skiing

Waltham High
Psychology

KRISTEN KENNY

Hanover, MA
Gymnastics, Skiing

Hanover H.S.
Undecided

KIMBERLY KILCOYNE

Boylston, MA
People, Student Gov't.

Tahanto Regional
Psychology

JEFFREY KING

Manchester, CT
Baseball, Basketball

Manchester H.S.
Criminal Justice



KEVIN KITCHEN

Springfield, MA
Music, Weightlifting

Central High
Pre-Med

KATE KLINE

Gloversville, NY
Music, Track

Gloversville H.S.
Journalism, Comm.

DARBI LAMBERT

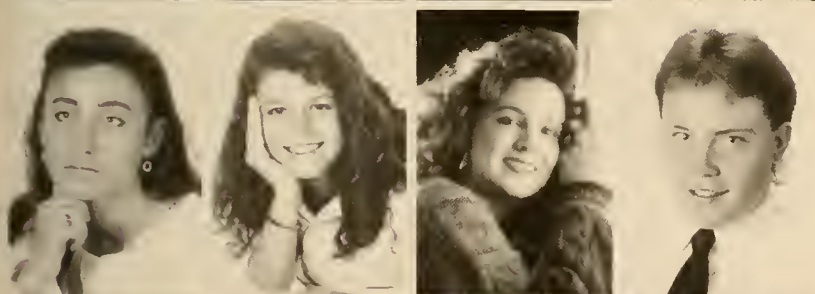
North Dartmouth, MA
Cheerleading, Dancing

Dartmouth High
Education

CYNTHIA LANE

Holden, MA
Gymnastics, Volleyball

Wachusett Regional H.S.
Spanish Education



JOANNE LANE

Boxford, MA
Art, Horses

Masconomet
Fine Arts

DANIELLE LAVIGNE

Shrewsbury, MA
Animals, Crew

Shrewsbury H.S.
Pre-Vet

MICHELLE LAVOIE

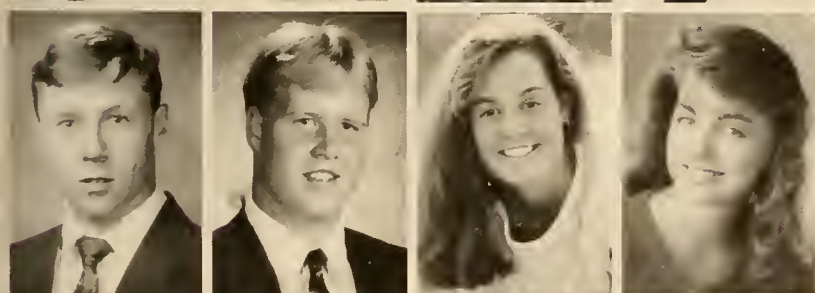
Millbury, MA
Music, Swimming

Holy Name C.C.h.s.
Criminal Justice

MATTHEW LEMIRE

Danvers, MA
Skiing, Weightlifting

Danvers High
Criminal Justice



CHRISTOPHER LENNON

Westwood, MA
Football, Track

Westwood Sr. H.S.
Criminal Justice

BRIAN LE TENDRE

Enfield, CT
Basketball, Football

Enfield High
Pre-Law

MEGAN LEYDON

Duxbury, MA
Tennis, Field Hockey

Duxbury H.S.
Education

DONNA LIBBEY

Boylston, MA
People, Field Hockey

Tahanto Regional
Education



VICTORIA LOTHROP

Stoughton, MA
Music, Swimming

Stoughton H.S.
Music

JANIS LUMSDEN

Yarmouth Port, MA
Drama, Sports

Dennis-Yarmouth Regional H.S.
Mathematics

RYAN LUZ

Woburn, MA
Baseball, Golf

Woburn High
Undecided

STEPHEN LYNN

Saugus, MA
Weightlifting, Wrestling

Saugus High
Education

STACEY MACAUDDA

Lexington, MA
Aerobics, Soccer

EMILY MACK

Sudbury, MA
Lacrosse, People

PAMELA MAC KENZIE

Chelmsford, MA
Bicycling, Swimming

SHAUNA MACKERER

Longmeadow, MA
Softball, Swimming

Lexington H.S.
Criminal Justice

Lincoln Sudbury
Psychology

Chelmsford H.S.
Journalism

Longmeadow High
Political Science



KEVIN MAC LENNAN

Danvers, MA
Baseball, Fishing

LOUIS MAGLIOZZI

Arlington, MA
Basketball, Weightlifting

MARIANELA MARTINEAU

Milton, MA
Soccer, Latin America

JOSEPH MASTRANGELO

Melrose, MA
Baseball, Basketball

Danvers H.S.
Sports Medicine

Arlington High
Undecided

Landmark
Pre-Law

Melrose H.S.
Criminal Justice



PAUL MATERAZZO

Cambridge, MS
Baseball, Basketball

JOHN MC CARTIN

Hyannis, MA
Baseball, Football

SEAN MC LEAN

Newton, MA
Fishing, Travel

KERRI MC QUESTON

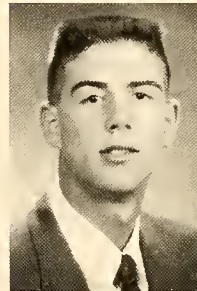
Taunton, MA
People, Politics

Cambridge Rindge & Latin
Business

Barnstable H.S.
Psychology

Newton North H.S.
Criminal Justice

Coyle And Cassidy
Mass Communications



KRISTIN MC QUESTON

Taunton, MA
Track, Children

JULIE MILICI

Agawam, MA
Drama, Music

ANDREA MILLER

Medfield, MA
Basketball, Field Hockey

RICHARD MILLER

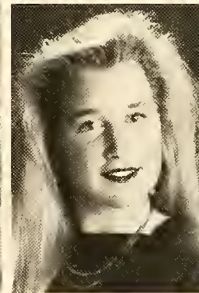
West Springfield, MA
Football, Wrestling

Coyle & Cassidy
Education

Agawam H.S.
Voice

Medfield H.S.
Sports Medicine

West Springfield H.S.
Liberal Arts



CINDY MISENOR

BillERICA, MA
Music, Drama

MICHAEL MISIASZEK

Ludlow, MA
Baseball, Tennis

DAVID MONTEIRO

New Bedford, MA
Baseball, Bowling

JULIE MORANO

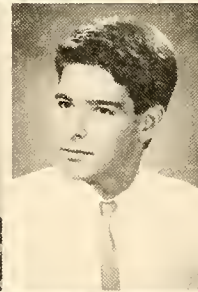
Worcester, MA
Aerobics, Softball

BillERICA Memorial High
Journalism

Ludlow H.S.
Criminal Justice

New Bedford High
Pre-Law

Holy Name H.S.
Movement Science



KERI-LYN MULLIS

Malden, MA
Gymnastics, Soccer

JANICE MURPHY

Braintree, MA
Student Gov't, Swimming

KERRI MURPHY

Maynard, MA
Cheerleading, Animals

KRISTINE MURPHY

Peabody, MA
Cheerleading, Soccer

Malden H.S.
Education

Braintree High
Communications

Hudson Catholic
Psychology

Peabody H.S.
Psychology





JENNIFER NAPIERATA
Webster, MA
Camping, Skiing
SARAH NELSON
Greenfield, MA
Aerobics, Travel
JENNIFER NESDALE
Wallingford, CT
Dancing, Reading
MICHELLE NIPOTI
North Granby, CT
Scuba Diving, Soccer

Bartlett H.S.
Criminal Justice
Greenfield H.S.
Business
Lyman Hall H.S.
Education
Granby Memorial High
Liberal Arts



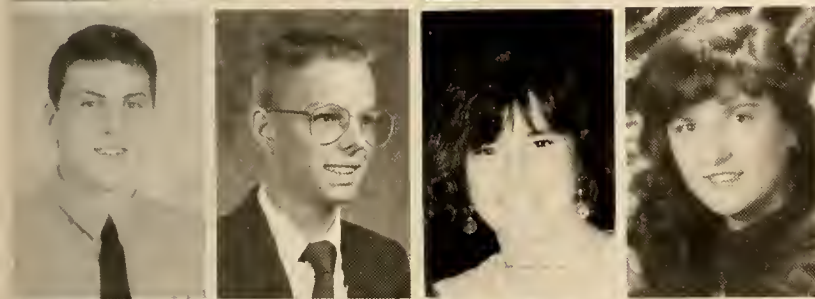
BRIAN O'NEILL
Uxbridge, MA
Football, Hockey
DIANA PACKARD
Plymouth, MA
Dancing, Skiing
ANDREA PAINCHAUD
Southwick, MA
Camping, Hockey
KIMBERLY PALENSCAR
Boxford, MA
Softball, Field Hockey

Uxbridge H.S.
Criminal Justice
Plymouth North H.S.
Psychology
Southwick High
Education
Masconomet Regional H.S.
Undecided



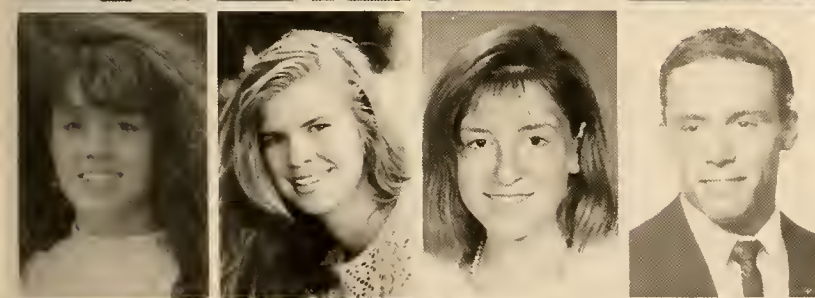
MICHAEL PANKIEVICH
Boston, MA
Skiing, Video Games
SUSAN PASQUERELLA
North Reading, MA
Cheerleading, Weight Training
RAVI PATEL
Mansfield, MA
Guitar, Poetry
JASON PECK
Princeton, MA
Reading, Weightlifting

Don Bosco H.S.
Criminal Justice
North Reading H.S.
Education
Bishop Feehan High
Criminal Justice
St. Peter-Marian
Psychology



CHARLIE PIKE
Whitman, MA
Football, Track
JAMES POLISENO
North Easton, MA
Fishing, Hunting
NOEL POPKO
Indian Orchard, MA
People, Swimming
MARY PYMM
Burlington, MA
Skiing, Travel

Whitman-Hanson
Pre-Law
Oliver Ames
Criminal Justice
Cathedral High
Psychology
Arlington Catholic
History



NICOLE QUINN
North Andover, MA
Hockey, Aerobics
SHEILA REARDON
Barnstable, MA
Lacrosse, People
TOBEY RENNA
Lexington, MA
Cheerleading, Dancing
KEITH RICHARD
Westminster, MA
Baseball, Volleyball

North Andover H.S.
Education
Barnstable High
Education
Lexington H.S.
Education
Oakmont Regional H.S.
Education



KRISTIN RICHARDS
Lynn, MA
People, Sports
LISA ROBITAILLE
Saugus, MA
Walking, Field Hockey
ANTHONY RONDINELLI
Springfield, MA
Reading, Weightlifting
JASON ROY
North Attleboro, MA
Baseball, Weightlifting

Lynn English
Sports Medicine
Saugus H.S.
Mass Communications
Cathedral H.S.
Business
North Attleboro H.S.
Criminal Justice

TARA RUBINO

Southwick, MA
Dancing, Poetry
OWEN RUSSELL
Bellingham, MA

Southwick-Tolland Reg. H.S.
Education

Bellingham Memorial High
Criminal Justice

TOM SCAFURI

Simsbury, CT
Baseball, Tennis

Simsbury H.S.
Science

TARA SCHAFFER

Attleboro, MA
Skiing, Ice Skating

Attleboro High
Psychology

NICHOLAS SELLERS

Chicopee, MA
Drama, Photography
KAREN SERVANT
Sturbridge, MA

Holyoke Catholic
Spanish-English

Tantasqua Regional H.S.
Business

JAMES SHAPIRO

South Hadley, MA
Baseball, Music

South Hadley H.S.
Computer Science

NATALIE SHAW

Springfield, MA
Basketball, Drama

Cathedral H.S.
History

JOHN SILVA

East Bridgewater, MA
Football, Skiing

East Bridgewater H.S.
Criminal Justice

STEPHANIE SIMOLARI

Canton, MA
Dancing, Piano

Canton High
Business

DARLENE SOJA

Chicopee, MA
Aerobics, Skiing

Chicopee H.S.
Journalism

KRISTI SOLDATO

Pittsfield, MA
Cheerleading, Drama

Taconic H.S.
Business

CHRIS STACKPOLE

Westerly, RI
Football, Track

Westerly H.S.
Undecided

ERIC STEVENS

Seekonk, MA
Guitar, Music

Seekonk H.S.
Business

DANIEL STIRES

Flanders, NJ
Music, Skiing

Roxbury H.S.
Mass Communications

SHARON SURPRISE

Springfield, MA
Dancing, Swimming

Cathedral High
Liberal Arts

JOE THERRIEN

Lunenburg, MA
Football, Weightlifting

Lunenburg H.S.
Pre-Law

CRAIG THEXTON

Westport, MA
Football, Weightlifting

Bishop Stang
Liberal Arts

ROBERT THORPE

Wilbraham, MA
Track, Cross Country

Minnechaug Regional
Sports Medicine

CARMEN TIRADO

Westfield, MA
Poetry, Reading

Education

MARK TOFFLING

Attleboro, MA
Skiing, Weightlifting

Attleboro H.S.
Criminal Justice

ADAM TORCIA

Guilford, CT
Music, Soccer

Guilford H.S.
Mass Communications

MARK TRAINOR

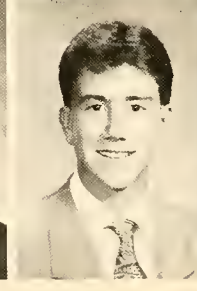
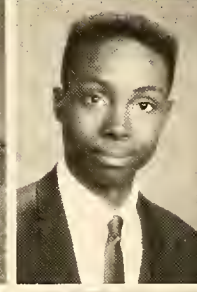
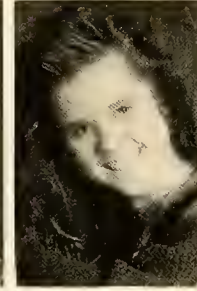
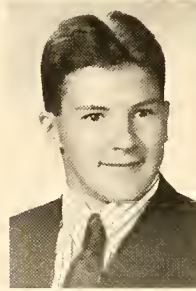
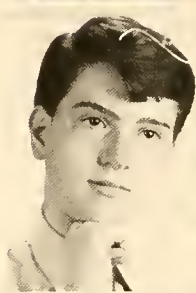
North Chelmsford, MA
Baseball, Track

Chelmsford High
Criminal Justice

ROBERT TURNER

Millbury, MA
Skiing, Track

Millbury Jr.-Sr. H.S.
Sports Medicine





ANGELA UPHAM

Orange, MA
Animals, Travel

Mahar Regional H.S.
Psychology

JON URBACZEWSKI

Boston, MA
Basketball, Skiing

Boston Latin
Liberal Arts

CRAIG VALLEE

Southbridge, MA
Baseball, Tennis

Bay Rath Regional Vocational
Fine Arts

TIMOTHY VAN TASEL

Somers, CT
Baseball, Student Gov't.

Somers High
Health & Fitness

JAKE WEINER

Boxford, MA
Jazz, Volleyball

Masconomet Regional
Music Education

MICHAEL WEISSMAN

Newton, MA
Baseball, Music

Newton South
Business

MARK WHITSITT

Granby, CT
Baseball, Music

Granby Memorial H.S.
Criminal Justice

KEVIN WOLSKI

Winchendon, MA
Basketball, Hiking

Murdock H.S.
Criminal Justice

ERIC WOODS

Concord, NH
Football, Water Skiing

Concord H.S.
Education

STEPHEN WYROCKI

Danvers, MA
Basketball, Snowboarding

Danvers High
Undecided

TONI ANN WYSOCKI

Springfield, MA
Aerobics, Soccer

Cathedral High
Education

CORY YATES

Sturbridge, MA
Skiing, Travel

Tantasqua
Sports Medicine

SOME OTHER NEW STUDENTS

NATE BAKER

Running, Cars

Marshfield, MA
Criminal Justice

JEFFREY DAWSON

Baseball, Basketball

Chicopee, MA
Sports Medicine

COLIN PREMO

Skiing, Water Skiing

Rutland, MA
Criminal Justice

SARA BELL

Basketball, Soccer

Springfield, MA
Parelegal Studies

HEATHER DESCHAMPS

Dancing, Music

Acushnet, MA

CHAD ROBERTS

Scuba Diving, Water Skiing

Needham, MA
Pre-Law

HEATHER BRENOCK

Dancing, People

Cohasset, MA
Education

KRISTEN FENTON

Art, Horses

Lynn, MA
Undecided

JONATHAN WARNER

Animals, Computers

Whately, MA
History

HEATHER BURKE

Softball

Longmeadow, MA
Psychology

LEE HANSCOM

Skiing, Swimming

Canton, MA
Business

KRISTAN WRIGHT

Lacrosse, Music

Agawam, MA
Political Science

TARA CRABTREE

People, Hiking

Georgetown, MA
Business

TRICIA KILCOYNE

Animals, Swimming

Wayland, MA
Business



1992

July

Sun	Mon	Tues	Weds	Thurs	Fri	Sat
			1	2	3	4
5	6	7	8	9	10	11
12	13	14	15	16	17	18
19	20	21	22	23	24	25
26	27	28	29	30	31	

August

Sun	Mon	Tues	Weds	Thurs	Fri	Sat
						1
2	3	4	5	6	7	8
9	10	11	12	13	14	15
16	17	18	19	20	21	22
23	24	25	26	27	28	29
30	31					

September

Sun	Mon	Tues	Weds	Thurs	Fri	Sat
		1	2	3	4	5
6	7	8	9	10	11	12
13	14	15	16	17	18	19
20	21	22	23	24	25	26
27	28	29	30			

October

Sun	Mon	Tues	Weds	Thurs	Fri	Sat
				1	2	3
4	5	6	7	8	9	10
11	12	13	14	15	16	17
18	19	20	21	22	23	24
25	26	27	28	29	30	31

November

Sun	Mon	Tues	Weds	Thurs	Fri	Sat
1	2	3	4	5	6	7
8	9	10	11	12	13	14
15	16	17	18	19	20	21
22	23	24	25	26	27	28
29	30					

December

Sun	Mon	Tues	Weds	Thurs	Fri	Sat
		1	2	3	4	5
6	7	8	9	10	11	12
13	14	15	16	17	18	19
20	21	22	23	24	25	
26	27	28	29	30	31	

1993

January

Sun	Mon	Tues	Weds	Thurs	Fri	Sat
					1	2
3	4	5	6	7	8	9
10	11	12	13	14	15	16
17	18	19	20	21	22	23
24	25	26	27	28	29	30
31						

February

Sun	Mon	Tues	Weds	Thurs	Fri	Sat
	1	2	3	4	5	6
7	8	9	10	11	12	13
14	15	16	17	18	19	20
21	22	23	24	25	26	27
28						

March

Sun	Mon	Tues	Weds	Thurs	Fri	Sat
	1	2	3	4	5	6
7	8	9	10	11	12	13
14	15	16	17	18	19	20
21	22	23	24	25	26	27
28	29	30	31			

April

Sun	Mon	Tues	Weds	Thurs	Fri	Sat
				1	2	3
4	5	6	7	8	9	10
11	12	13	14	15	16	17
18	19	20	21	22	23	24
25	26	27	28	29	30	

May

Sun	Mon	Tues	Weds	Thurs	Fri	Sat
						1
2	3	4	5	6	7	8
9	10	11	12	13	14	15
16	17	18	19	20	21	22
23	24	25	26	27	28	29
30	31					

June

Sun	Mon	Tues	Weds	Thurs	Fri	Sat
		1	2	3	4	5
6	7	8	9	10	11	12
13	14	15	16	17	18	19
20	21	22	23	24	25	26
27	28	29	30			



A series of horizontal lines for writing, consisting of a solid top line, a dashed midline, and a solid bottom line, repeated down the page.



A series of horizontal dashed lines for writing, spanning the width of the page below the graphic.



A series of horizontal lines for writing, consisting of a solid top line, a dashed midline, and a solid bottom line, repeated down the page.



A series of horizontal dashed lines for writing, spanning the width of the page below the graphic.

